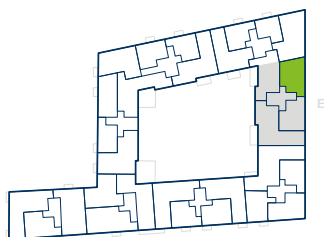
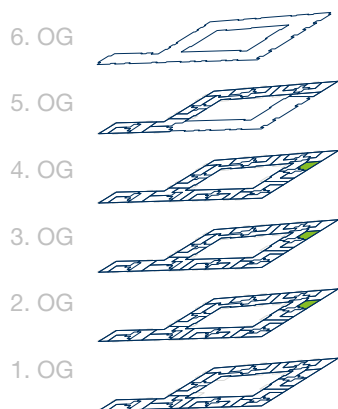
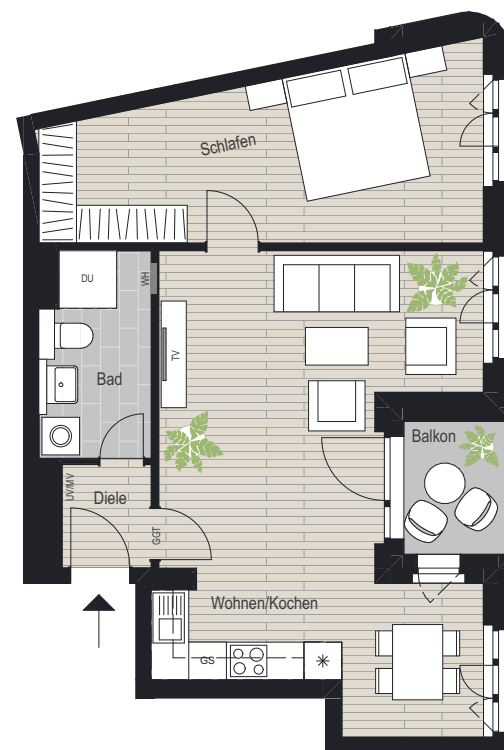


2-Zimmer-Wohnung

TH E
 2. OG, 3. OG, 4. OG
 WE 72, 76, 80

Beispielhaft WE 72

Zimmer	Größe
Wohnen/Kochen	32,25 m ²
Schlafen	18,25 m ²
Bad	5,75 m ²
Diele	2,25 m ²
Balkon (50%)	2,00 m ²
Gesamt	60,50 m²



2. OG-4.OG