

2-Zimmer-Wohnung

Barrierefrei

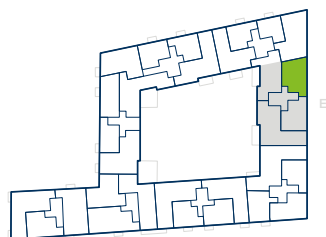
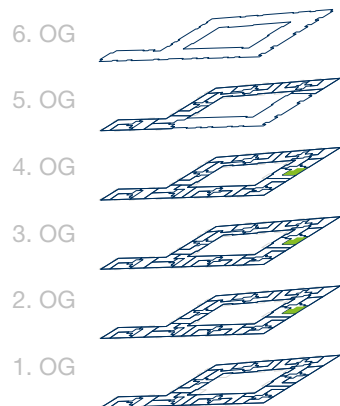
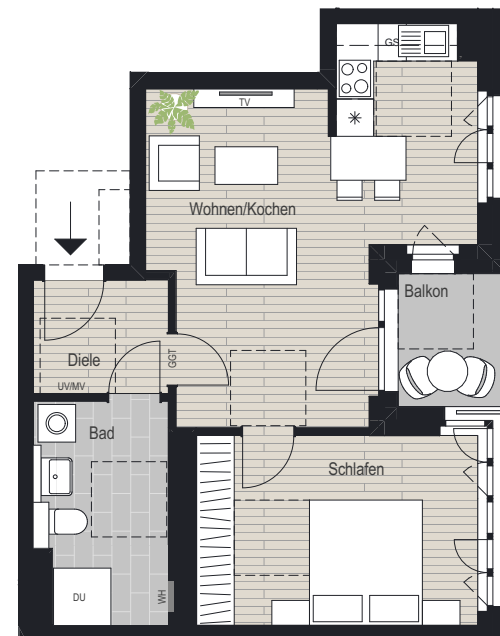
TH E

2. OG, 3. OG, 4. OG

WE 73, 77, 81

Beispielhaft WE 73

Zimmer	Größe
Wohnen/Kochen	24,50 m ²
Schlafen	13,75 m ²
Bad	7,25 m ²
Diele	4,00 m ²
Balkon (50 %)	2,00 m ²
Gesamt	51,50 m²



2. OG-4.OG

