

3-Zimmer-Wohnung

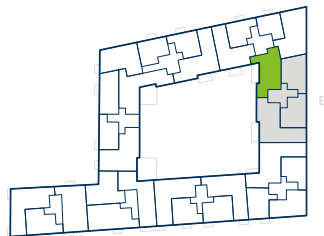
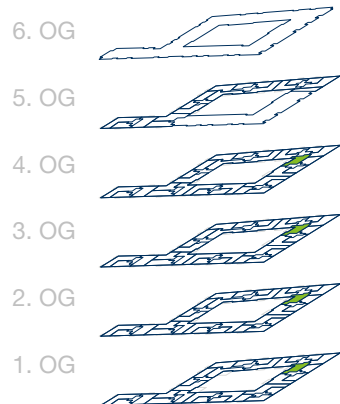
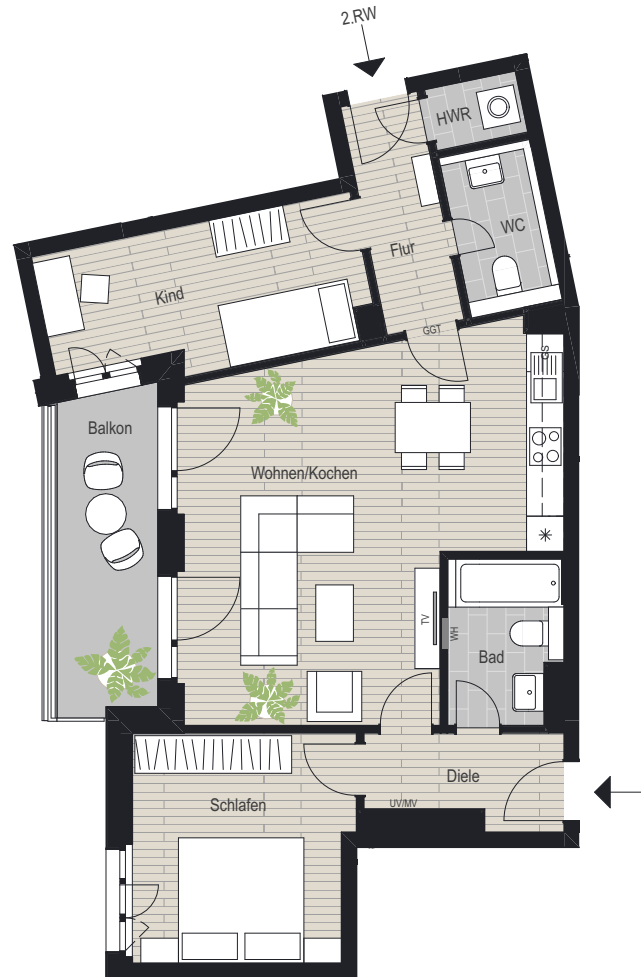
TH E

1. OG, 2. OG, 3. OG, 4. OG

WE 71, 75, 79, 83

Beispielhaft WE 71

| Zimmer        | Größe                      |
|---------------|----------------------------|
| Wohnen/Kochen | 31,25 m <sup>2</sup>       |
| Schlafen      | 12,50 m <sup>2</sup>       |
| Kind          | 11,25 m <sup>2</sup>       |
| Bad           | 4,50 m <sup>2</sup>        |
| WC            | 4,00 m <sup>2</sup>        |
| HWR           | 1,25 m <sup>2</sup>        |
| Diele         | 4,75 m <sup>2</sup>        |
| Flur          | 4,25 m <sup>2</sup>        |
| Balkon (50%)  | 4,25 m <sup>2</sup>        |
| <b>Gesamt</b> | <b>78,00 m<sup>2</sup></b> |



1. OG-4. OG